

ABC Bypass System (Y-Tools)

UK Patent No. GB2590029

The patented UMS Flowell ABC Bypass System is a simpler, faster installation than conventional y-tool installations. No pre job space out is required with the ESP components, the bypass tubing minimum length is simply the ESP length plus fifteen feet.

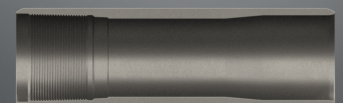
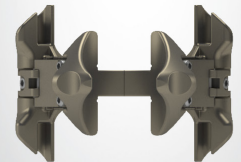
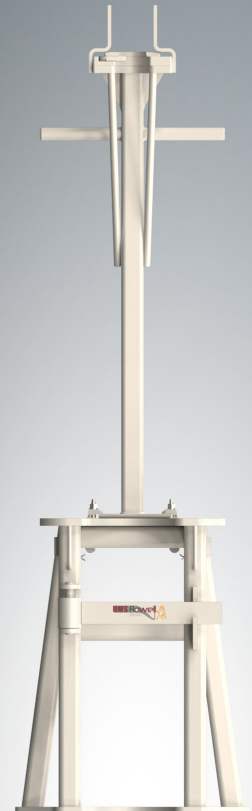
The bypass tubing is installed first with conventional handling equipment and when complete, it is suspended in a hoist or two tiers worktable. The ESP is then installed with special bypass clamps which slide down the bypass tubing.

Finally, the Y-tool is picked up and made up the ESP pump and lowered to allow the bypass swivel to be made up. To view the method of installation, please visit our deployment animation at the following [Link](#).

SYSTEM REQUIREMENTS

- Standard Y-tool assembly with either telescopic or non-telescopic swivel
- Flush Joint Bypass Tubing (15ft or 30ft)
- Bell Type Wireline Entry Guide instead of a half mule shoe
- Wireline Entry Guide
- Special Bypass Tubing Clamps (no grip on the bypass tubing)
- Special Motor Base Plug for clamping the ESP motor or ESP gauge base to the bypass tubing
- Optional Special Two-Tier Worktable
- Handling equipment comprised of a Worktable, Safety Clamp and Swivel Lift Nubbin for handling the bypass tubing
- Conventional service tools as the standard Y-tool system (standing valve, isolation tool, wireline logging plug, coil tubing logging plug)

Maximum OD of ESP (in)						
	3.750	3.870	4.000	5.130	5.400	5.625
Casing size	Maximum bypass tubing OD (in)					
7" 23-26lb/ft	2.375	2.125	2.125	-	-	-
7" 29-35lb/ft	2.125	2.125	-	-	-	-
9-5/8" 40-47lb/ft	2.875	2.875	2.875	2.875	2.875	2.875
9-5/8" 53.5lb/ft	2.875	2.875	2.875	2.875	2.875	2.375
Standard Bypass Tubing data						
Tubing size and weight	OD (in)	ID (in)	Internal Drift (in)			
2-7/8" 6.4lb/ft	2.875	2.441	2.347			
2-3/8" 4.6lb/ft	2.375	1.995	1.901			
2-1/8" 2.4lb/ft	2.125	1.811	1.717			



Technical Specifications - ABC Work Table

ABC Work Table				
Work Table Part No.	Bpass Cartridge Part No.	Bypass Tubing Size	Table SWL	Bypass Cartridge SWL
WT-00077-3500	WT-00100-3500	3-1/2"	20 Ton	2 Ton
WT-00077-2875	WT-00100-2875	2-7/8"	20 Ton	2 Ton
WT-00077-2375	WT-00100-2375	2-3/8"	20 Ton	2 Ton
WT-00077-2125	WT-00100-2125	2-1/8"	20 Ton	2 Ton



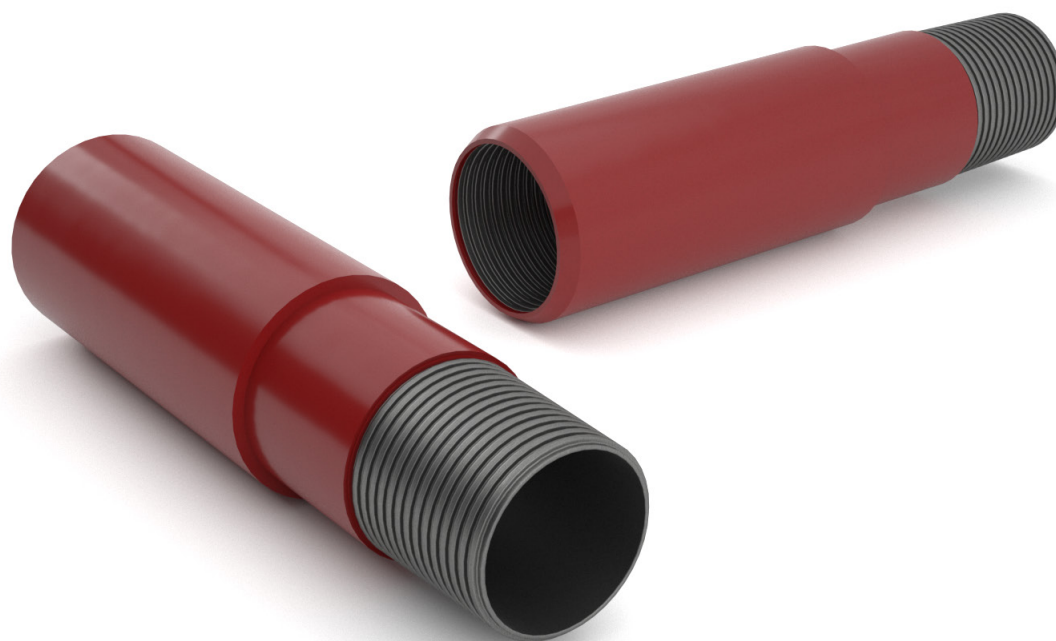
Technical Specifications - ABC Bypass Clamp

Bypass Clamp				
Part Number	Casing Size	Clamp Od (in)	ESP Size	Bypass Tubing Size
TD12-096	7"	5.960	Universal 300/400 Series	2-1/8"
TD12-100	7"	5.960	Universal 300 Series	2-3/8"
BPC-0700-014C	7"	6.000	Novomet 319 Series	2-7/8"
BPC-09625-005	9-5/8"	8.350	500 Series	2-3/8"
BPC-09625-013	9-5/8"	8.350	Universal 500 Series	2-7/8"
BPC-09625-034	9-5/8"	8.350	400/500 Series fixed neck sizes - refer to drawing table	2-7/8"
BPC-09625-034	9-5/8"	8.350	Universal 400 Series	2-7/8"
BPC-09625-069	9-5/8"	8.350	Universal 500 Series - ABC Installation	2-7/8"
BPC-09625-051	9-5/8"	8.350	Universal 500 Series - Flatpack (Ecuador specific)	2-7/8"
BPC-09625-100	9-5/8"	8.350	Universal 400 Series	3-1/2"
BPC-09625-059	9-5/8"	8.250	Novomet 406 Series	4-1/4"
BPC-09625-048	9-5/8"	8.375	Universal 300 Series	4-1/2"
BPC-10750-0003	10-3/4"	9.53	Machined Neck for 500 Series	3-1/2"
BPC-10750-0008	10-3/4"	9.53	SLB 562 Protector (Trident MLE Pothead)	3-1/2"



Technical Specifications - ABC Safety Sub

ABC Safety Sub			
Part Number	Shoulder Dia (in)	Box Thread	Pin Thread
XO-00390	3.222	2-7/8" 6.4# F2J	2-7/8" 6.4# F2J



Technical Specifications - ABC Re-Entry Guide

ABC Re-Entry Guide		
Part Number	Outer Diameter (in)	Box Thread
WEG-00008	3.13	2-7/8" 6.4# F2J

