

## Coil Tubing Plug Type “D”

The UMS Flowell Coiled Tubing Logging Plug Type “D” can be deployed in all standard UMS Flowell Bypass Systems and is used as a means of sealing between the Bypass Nipple and the coil tubing outside diameter. The plug comes in various combinations of coiled tubing and Bypass Nipple sizes- see table below.

The coil tubing plug is primarily used on production logging runs, and can also be used for clean out operations, and as a means of running downhole samplers below the ESPs on horizontal reservoir sections.

The coil tubing plug is attached to the coil by a connector. The connector is made up to a sleeve that passes through the coil tubing plug and makes up to a crossover below, which is made up to the tool string.

The coil tubing plug is released from the internal sleeve when seated in the Bypass Nipple, allowing the coil to pass through the logging plug and through the bypass tubing into the reservoir below the ESP. The positive locking mechanism prevents the logging plug lock from unseating too early.

When the coil operations are complete, the internal sleeve above the tool string enters the coil tubing plug, allowing the plug to be unseated without any shearing or excessive over pull.

### FEATURES & BENEFITS

- Compact design
- Push down to seat
- Pull up to release
- Range of seal sizes from 2.750” to 1.875” with various coil size combinations
- Positive Locking Mechanism

### SPECIFICATIONS

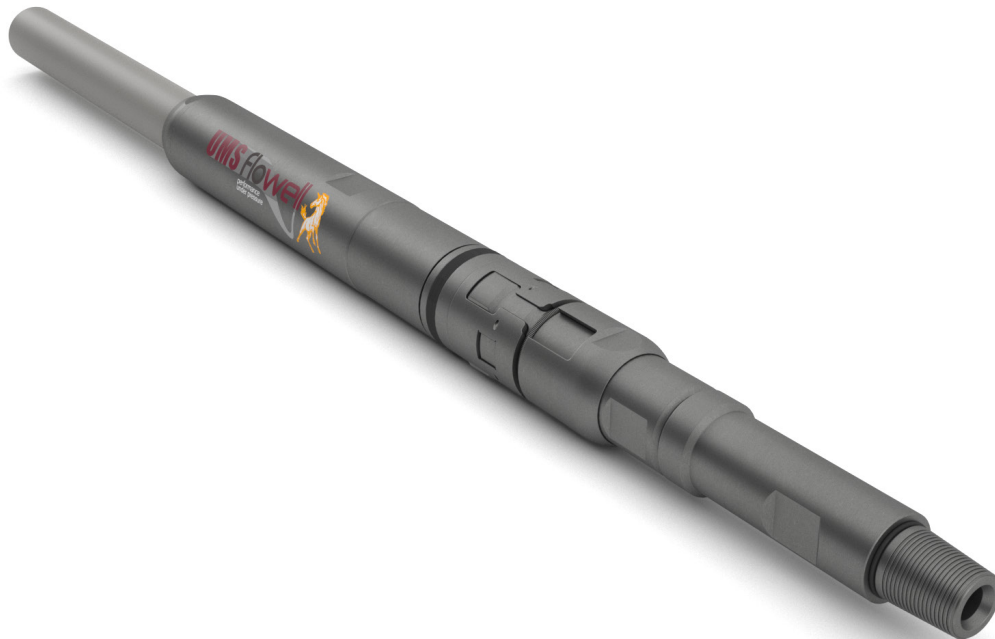
- 5000psi MWP
- Up to 350F with elastomers
- 17-4 PH Stainless steel with Tuftride QPQ finish
- Viton or Aflas seals as standard



# Technical Specifications - Coil Tubing Plug Type "D"

Standard Coil Tubing Plugs - Type D				
Coil Tubing Size (in)	Nipple Size (in)	Part Number	Description	Redress Kit Part Number
2.00	3.812	CTP3812200001V	3.812" X 2" COIL TUBING PLUG, VITON	RKCTP3812200001V
2.00	2.750	CTP2750200001V	2.750" X 2" COIL TUBING PLUG, VITON	RKCTP2750200001V
1.75	3.812	CTP3812175001V	3.812" X 1.75" COIL TUBING PLUG, VITON	RKCTP3812175001V
1.75	2.750	CTP2750175001V	2.750" X 1.75" COIL TUBING PLUG, VITON	RKCTP2750175001V
1.75	2.625	CTP2625175001V	2.625" X 1.75" COIL TUBING PLUG, VITON	RKCTP2625175001V
1.50	3.812	CTP3812150001V	3.812" X 1.50" COIL TUBING PLUG, VITON	RKCTP3812150001V
1.50	2.750	CTP2750150001V	2.750" X 1.50" COIL TUBING PLUG, VITON	RKCTP2750150001V
1.50	2.625	CTP2625150001V	2.625" X 1.50" COIL TUBING PLUG, VITON	RKCTP2625150001V
1.50	2.562	CTP2562150001V	2.562" X 1.50" COIL TUBING PLUG, VITON	RKCTP2562150001V
1.50	2.312	CTP2312150001V	2.312" X 1.50" COIL TUBING PLUG, VITON	RKCTP2312150001V

Coil Tubing OD (in)	Bypass Nipple Size (in)							Minimum Bypass Tubing (Nominal OD) (in)
	2.312	2.562	2.625	2.75	2.812	2.875	3.812	
1.50	✓	✓	✓	✓	✓	✓	✓	2.125
1.75	x	x	✓	✓	✓	✓	✓	2.375
2.00	x	x	x	✓	✓	✓	✓	2.875



# Coil Tubing Plug Type “A” Superior

The UMS Flowell Coiled Tubing Logging Plug Type “A” can be deployed in all standard UMS Flowell Bypass Systems and is used as a means of sealing between the Bypass Nipple and the coil tubing outside diameter. The plug comes in various combinations of coiled tubing and Bypass Nipple sizes- see table below.

The coil tubing plug is primarily used on production logging runs, and can also be used for clean out operations, and as a means of running downhole samplers below the ESPs on horizontal reservoir sections.

The coil tubing plug is attached to the coil by a connector. The connector is made up to a sleeve that passes through the coil tubing plug and makes up to a crossover below, which is made up to the tool string.

The coil tubing plug is released from the internal sleeve when seated in the Bypass Nipple, allowing the coil to pass through the logging plug and through the bypass tubing into the reservoir below the ESP. The positive locking mechanism prevents the logging plug lock from unseating too early.

When the coil operations are complete, the internal sleeve above the tool string enters the coil tubing plug, allowing the plug to be unseated without any shearing or excessive over pull.

## FEATURES & BENEFITS

- Compact design
- Push down to seat
- Pull up to release
- Range of seal sizes from 2.750” to 1.875” with various coil size combinations
- Positive Locking Mechanism

## SPECIFICATIONS

- 5000psi MWP
- Up to 350F with elastomers
- 17-4 PH Stainless steel with Tuftride QPQ finish
- Viton or Aflas seals as standard



# Technical Specifications - Coil Tubing Plug Type “A” Superior

Standard Coil Tubing Plugs - Type A Superior				
Coil Tubing Size (in)	Nipple Size (in)	Part Number	Description	Redress Kit Part Number
2.00	3.812	SCTP3812200001V	3.812" X 2" COIL TUBING PLUG, VITON	RKSCTP3812200001V
2.00	2.750	SCTP2750200001V	2.750" X 2" COIL TUBING PLUG, VITON	RKSCTP2750200001V
1.75	3.812	SCTP3812175001V	3.812" X 1.75" COIL TUBING PLUG, VITON	RKSCTP3812175001V
1.75	2.750	SCTP2750175001V	2.750" X 1.75" COIL TUBING PLUG, VITON	RKSCTP2750175001V
1.75	2.625	SCTP2625175001V	2.625" X 1.75" COIL TUBING PLUG, VITON	RKSCTP2625175001V
1.50	3.812	SCTP3812150001V	3.812" X 1.50" COIL TUBING PLUG, VITON	RKSCTP3812150001V
1.50	2.750	SCTP2750150001V	2.750" X 1.50" COIL TUBING PLUG, VITON	RKSCTP2750150001V
1.50	2.625	SCTP2625150001V	2.625" X 1.50" COIL TUBING PLUG, VITON	RKSCTP2625150001V
1.50	2.562	SCTP2562150001V	2.562" X 1.50" COIL TUBING PLUG, VITON	RKSCTP2562150001V
1.50	2.312	SCTP2312150001V	2.312" X 1.50" COIL TUBING PLUG, VITON	RKSCTP2312150001V

Coil Tubing OD (in)	Bypass Nipple Size (in)							Minimum Bypass Tubing (Nominal OD) (in)
	2.312	2.562	2.625	2.75	2.812	2.875	3.812	
1.50	✓	✓	✓	✓	✓	✓	✓	2.125
1.75	x	x	✓	✓	✓	✓	✓	2.375
2.00	x	x	x	✓	✓	✓	✓	2.875



# Technical Specifications - Coil Tubing Plug - Roll On Connectors

Roll On Connector									
Coil Tubing Size (in)	Wall thickness (in)								
	.094	.102	0.109	0.125	0.134	0.156	0.175	.190	0.204
2.00	-	-	Pt No: ROC- 2000-109-1	Pt No: ROC- 2000-125-1	Pt No: ROC- 2000-134-1	Pt No: ROC- 2000-156-1	Pt No: ROC- 2000-175-1	-	Pt No: ROC- 2000-204-1
	-	-	Redress Kit: RKROC- 200109-1	Redress Kit: RKROC- 200125-1	Redress Kit: RKROC- 200134-1	Redress Kit: RKROC- 200156-1	Redress Kit: RKROC- 200175-1	-	Redress Kit: RKROC- 2000-204-1
1.75	-	-	Pt No: ROC- 1750-109-1	Pt No: ROC- 1750-125-1	Pt No: ROC- 1750-134-1	Pt No: ROC- 1750-156-1	-	Pt No: ROC- 1750-190-1	Pt No: ROC- 1750-204-1
	-	-	Redress Kit: RKROC- 175109-1	Redress Kit: RKROC- 175125-1	Redress Kit: RKROC- 175134-1	Redress Kit: RKROC- 175156-1	-	Redress Kit: RKROC- 175190-1	Redress Kit: RKROC- 175204-1
1.50	Pt No: ROC- 1500-094-1	Pt No: ROC- 1500-102-1	Pt No: ROC- 1500-109-1	Pt No: ROC- 1500-125-1	Pt No: ROC- 1500-134-1	Pt No: ROC- 1500-156-1	Pt No: ROC- 1500-175-1	-	-
	Redress Kit: RKROC- 150094-1	Redress Kit: RKROC- 150102-1	Redress Kit: RKROC- 150109-1	Redress Kit: RKROC- 150125-1	Redress Kit: RKROC- 150134-1	Redress Kit: RKROC- 150156-1	Redress Kit: RKROC- 150175-1	-	-



# Technical Specifications - Coil Tubing Plugs - Tool String Crossovers

CTP Tool String Crossover			
Coil Tubing Size (in)	Part Number	Description	Redress Kit P/N
2.00	XO-CTP-2000-01	2.00" COIL CROSSOVER, 1.50-10 STUB ACME BOX X 1.8125-10 STUB ACME PIN	RKXOCTP200001
2.00	XO-CTP-2000-02	2.00" COIL CROSSOVER, 1-1/2" AMMT BOX X 1.50-10 STUB ACME PIN	RKXOCTP200002
2.00	XO-CTP-2000-03	2.00" COIL CROSSOVER, 1.50-10 STUB ACME BOX X 1-1/2" AMMT PIN	RKXOCTP200003
1.75	XO-CTP-1750-01	1.75" COIL CROSSOVER, 1.50-10 STUB ACME BOX X 1.8125-10 STUB ACME PIN	RKXOCTP175001
1.75	XO-CTP-1750-02	1.75" COIL CROSSOVER, 1.50-10 STUB ACME BOX X 1" AMMT PIN	RKXOCTP175002
1.75	XO-CTP-1750-03	1.75" COIL CROSSOVER, 1.50-10 STUB ACME BOX X 1-1/2" AMMT PIN	RKXOCTP175003
1.75	XO-CTP-1750-04	1.75" COIL CROSSOVER, 1.50-10 STUB ACME BOX X 1-1/2" AMMT PIN	RKXOCTP175004
1.75	XO-CTP-1750-05	1.75" COIL CROSSOVER, 1" AMMT BOX X 1.50-10 STUB ACME PIN	RKXOCTP175005
1.50	XO-CTP-1500-02	1.50" COIL CROSSOVER, 1.25-10 STUB ACME BOX X 1" AMMT PIN	RKXOCTP150002
1.50	XO-CTP-1500-03	1.50" COIL CROSSOVER, 1.25-10 STUB ACME BOX X 1" AMMT PIN	RKXOCTP150003
1.50	XO-CTP-1500-04	1.50" COIL CROSSOVER, 1.25-10 STUB ACME BOX X 1-1/2" AMMT PIN	RKXOCTP150004
1.50	CTP-0240	1.50" COIL CROSSOVER, 1.25-10 STUB ACME BOX X 5/8" SUCKER ROD BOX (15/16"-10 UN)	-

