

## Non-Sealing Pod Bottom Crossover

The shroud bottom crossover provides a means of adapting the shroud casing to the tailpipe tubing. The crossover can be provided with cable slots to suit any service lines going passed the outside of the shroud to the lower completion.

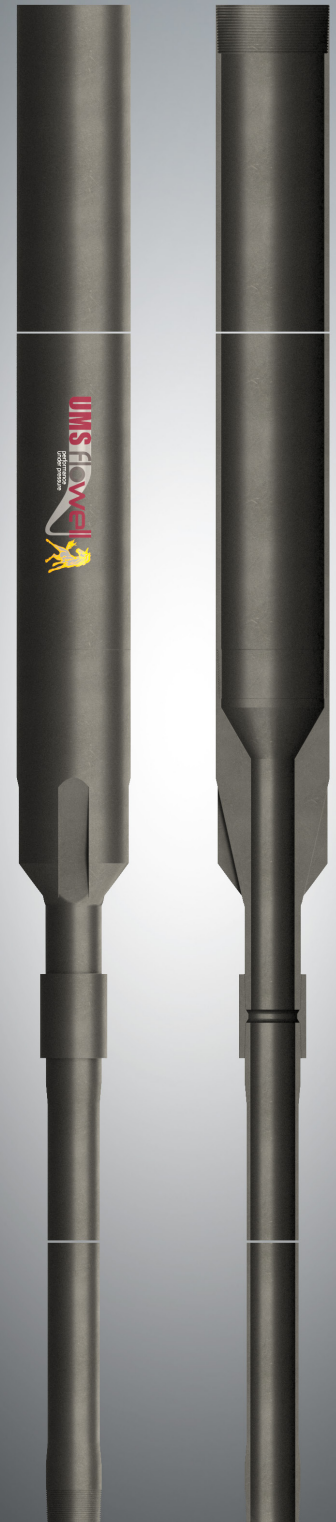
The bottom crossover can be supplied with a 10ft casing pup joint and 6ft tubing pup joint made up to the crossover for ease of handling at the well site.

### FEATURES & BENEFITS

- Adapts the shroud casing connection to the tailpipe connection
- Optional cable slots for service lines below the shroud or dual shroud applications

### SPECIFICATIONS

- Low alloy steel or 13Cr metallurgy
- Connections to suit shroud casing and tailpipe



# Technical Specifications - Non-Sealing Pod Bottom Crossover

Part Number	Pod casing size (in)	Upper Connection	Lower Connection	Comments
SHRD-0040	7-5/8	7-5/8" 29.7# VAM FJL BOX	3-1/2" 9.3# EUE PIN	Without 10ft casing pup joint
SHRD-0056	7	7" API Buttress	3-1/2" 9.3# EUE PIN	Without 10ft casing pup joint
SHRD-0061	7-5/8	7-5/8" 29.7# VAM FJL BOX	3-1/2" 9.3# EUE PIN	With 10ft casing pup joint
SHRD-0064	7-5/8	7-5/8" 33.7# VAM FJL BOX	3-1/2" 9.3# EUE PIN	Without 10ft casing pup joint
SHRD-0081	7-5/8	7-5/8" 29.7# VAM FJL BOX	2-7/8" 6.4# TENARIS BLUE PIN	With 10ft casing pup joint
XO-00321	5-1/2	5-1/2" 15.5# F2J BOX	2-3/8" 4.6# NUE PIN	With 10ft perforated casing pup joint and cable clip for 11x11mm encapsulated line

