

Tubing Drain Valve (Internal Pressure Shear)

The UMS Flowell Tubing Drain Valve (Bleeder Valve) with internal pressure shear is a simple way to prevent pulling a wet string on pump completions with a check valve, or pump strings that are blocked with sand and debris.

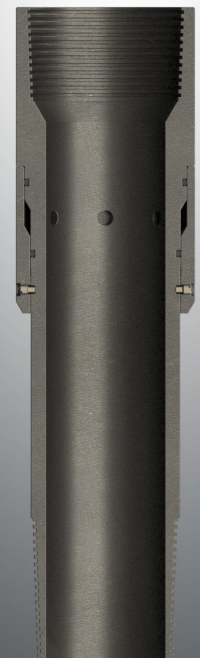
Pressure is applied to the tubing on surface, at the pre-determined pressure the piston is actuated and shears the screws to open communication with the annulus, allowing the tubing string to drain.

FEATURES & BENEFITS

- Compact design
- Field settable to desired shear pressure
- Reliable and simple
- Full bore to match tubing
- Available in 2-7/8" to 4-1/2" sizes
- Available in any customer specified thread connection

SPECIFICATIONS

- See table for pressure settings
- Up to 400F



Technical Specifications - Tubing Drain Valve

Part Number	Tubing size	OD (in)	Maximum Pressure setting	Pressure Per Shear Screw
BV-2875-01	2.875"	3.88	7,680psi	640psi
BV-3500-01	3.500"	4.50	6,000psi	500psi
BV-4500-01	4.500"	5.62	5,040psi	420psi

