

## Pump Support For Y-Tool Applications

The Pump Support Sub is an optional component of the bypass system. It is primarily used when running dual ESP's or when tailpipe is to be run below the ESP and located into a PBR.

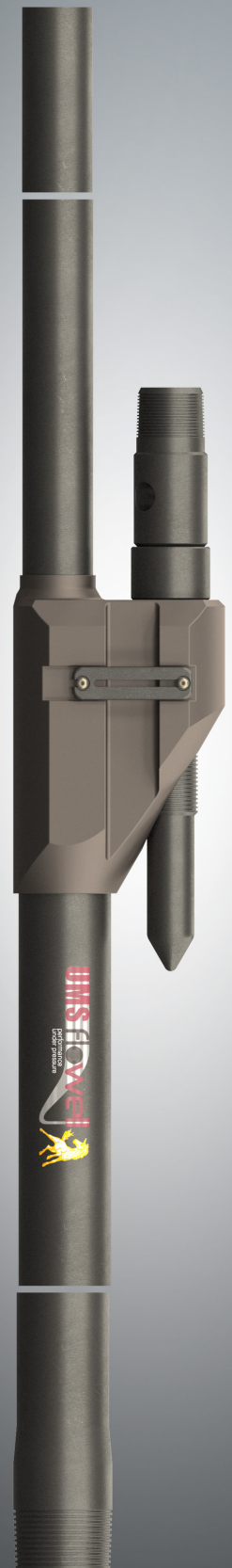
The purpose of the Pump Support Sub is to transfer any compressive loading to the ESP and tensile loading to the bypass tubing upon retrieval of the system.

### FEATURES & BENEFITS

- Allows compressive loads to be transferred onto the ESP rather than the weaker y-tool bypass tubing
- Allows tensile loads to be transferred through the bypass tubing rather than the weaker ESP flange bolts
- Available for 10-3/4", 9-5/8", 7-5/8" & 7" casing sizes
- 2-3/8" EUE swivel for make up to the ESP motor base or ESP gauge
- Simple installation

### SPECIFICATIONS

- Available in low alloy or 13Cr metallurgy
- Choice of threaded connections
- Tensile strength dependent on the bypass tubing
- Thread weights and grades to suit application
- Supplied in a torqued and pressure tested sub assembly with an 8ft bypass tubing pup joint and 6ft tailpipe pup joint as standard for handling
- Requires bypass tubing to be spaced out between the Y-tool and pump support, using standard bypass tubing lengths, and in addition, with spacer bypass tubing pup joints supplied in 1ft, 2ft, 3ft, 5ft and 8ft lengths. Fine adjustment is made with the telescopic swivel which has 15" stroke as standard.



# Technical Specifications - Pump Support For Y-Tool Applications

Part Number	OD (in)	Pump Pin Thread	Bypass Box Thread	Bypass Pin Thread
7PS-00014	5.80	2-3/8" 4.7# EUE	2-3/8" 4.6# F2J	3-1/2" 9.3# EUE
7PS-00015	5.80	2-3/8" 4.7# EUE	2-1/8" 2.4# F2J	3-1/2" 9.3# EUE
7PS-00020	6.10	2-3/8" 4.6# NUE	2-7/8" 6.4# F2J	2-7/8" 6.4# FOX
7PS-00021	6.10	2-3/8" 4.6# NUE	2-7/8" 6.4# F2J	3-1/2" 9.2# VAM TOP
958PS-018	8.00	2-3/8" 4.7# EUE	2-7/8" 6.4# F2J	3-1/2" 9.3# EUE
958PS-027**	8.00	2-3/8" 4.7# EUE	2-7/8" 6.4# F2J	3-1/2" 9.3# EUE
958PS-029	8.25	2-3/8" 4.7# EUE	2-3/8" 4.6# F2J	4-1/2" 12.6# VAM TOP
958PS-033	8.00	2-3/8" 4.6# NUE	2-7/8" 6.4# F2J	2-7/8" 6.5# EUE
958PS-039	8.00	2-3/8" 4.7# EUE	2-7/8" 6.4# F2J	4-1/2" 12.6# VAM TOP
958PS-049	8.10	2-3/8" 4.6# NUE	4-1/4" 10# F2J	4-1/2" 12.6# VAM TOP
958PS-052	8.00	2-3/8" 4.6# NUE	2-7/8" 6.4# F2J	3-1/2" 9.2# VAM TOP

\*\* Same as 958PS-018 but machined from solid

