

## Pod Bottom Crossover Assembly

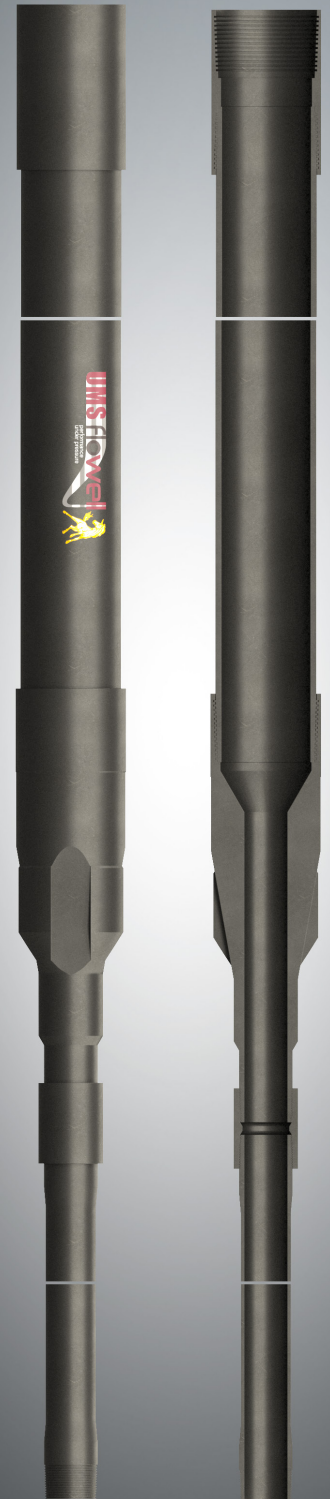
The UMS Flowell Pod Bottom Crossover connects the pod casing to the tailpipe below the pod. A 10ft casing pup joint and a 6ft tubing pup joint are made up to the crossover to act as saver subs, allowing the assembly to be picked up from the pipe deck, ready to be made up to the completion string.

### FEATURES & BENEFITS

- Coupled or flush joint casing connections to suit the pod casing
- 5-1/2" to 10-3/4" pod casing sizes available
- Thread connections to meet customer requirements
- Box x Pin configuration

### SPECIFICATIONS

- Low alloy steel or 13Cr material options
- API 5CT



# Technical Specifications - Pod Bottom Crossover Assembly

Part Number	Pod Size	OD (in)	Top Connection	Bottom Connection
PS-5500-0043	5-1/2"	5.930	5-1/2" 15.5# VAM TOP HC BOX	3-1/2" 15.5# VAM TOP PIN
XO-00250	5-1/2"	6.050	5-1/2" 17# API BUTTRESS BOX	3-1/2" 9.3# EUE PIN
XO-00315	7"	7.676	7" 26# API BUTTRESS BOX	3-1/2" 9.3# EUE PIN
PS-7000-17	7"	7.470	7" 29# JFE BEAR SC BOX	4-1/2" 12.6# JFE BEAR PIN
PS-7000-20	7"	7.644	7" 29# VAM TOP BOX	3-1/2" 9.3# EUE PIN
PS-7625-0041	7-5/8"	7.625	7-5/8" 33.7# ATLAS BRADFORD ST-L BOX	5-1/2" 17# TENARIS BLUE PIN
PS-7625-0061	7-5/8"	7.625	7-5/8" 33.7# TENARIS WEDGE 513 BOX	5-1/2" 23# TENARIS BLUE PIN
PS-7625-0077	7-5/8"	7.625	7-5/8" 29.7# VAM FJL BOX	3-1/2" 15.8# TENARIS PH6 PIN
PS-7625-0089	7-5/8"	7.625	7-5/8" 29.7# VAM FJL BOX	4-1/2" 12.6# VAM TOP PIN
PS-7625-0093	7-5/8"	7.625	7-5/8" 29.7# ATLAS BRADFORD ST-L BOX	4-1/2" 12.6# JFE BEAR PIN
PS-7625-0108	7-5/8"	8.213	7-5/8" 29.7# VAM TOP BOX	5-1/2" 17# VAM TOP PIN
PS-7625-0121 (INTEGRAL NIPPLE)	7-5/8"	7.625	7-5/8" 29.7# VAM FJL BOX	4-1/2" 12.6# VAM TOP PIN
PS-7625-0141	7-5/8"	7.625	7-5/8" 33.7# HUNTING SEAL LOCK FLUSH BOX	4-1/2" 12.6# JFE BEAR PIN
PS-7625-0141	7-5/8"	7.625	7-5/8" 33.7# ATLAS BRADFORD ST-L BOX	5-1/2" 17# VAM TOP PIN
PS-8625-03	8-5/8"	8.625	8-5/8" 40# TENARIS WEDGE 513 BOX	5-1/2" 23# TENARIS BLUE PIN
PS-8625-09	8-5/8"	8.625	8-5/8" 40# ATLAS BRADFORD ST-L BOX	5-1/2" 17# JFE BEAR PIN

