

Bypass Tubing Clamp

The UMS Flowell Bypass Tubing Clamp is designed to provide full protection to the ESP MLE cable and auxiliary control/injection lines, whilst ensuring adequate flow area around the completion. The clamp also maintains the maximum stand-off between the ESP assembly and the casing, to give cooling to the electric motors.

The 9-5/8" bypass clamp has adjustable jaws to allow fitting onto 400 to 562 series ESP necks. The clamp has gripping features to secure the clamp to the bypass tubing. The standard clamp fits 2-7/8" bypass tubing. Fitting inserts to the clamp allows the clamp to be changed to 2-3/8" bypass tubing.

The 9-5/8" x 2-7/8" Bypass Clamp has been load tested to 0.86 ton before slippage occurred. The clamps have universal cable clips on either side to grip 1/4" discharge pressure lines and the ESP MLE cable.

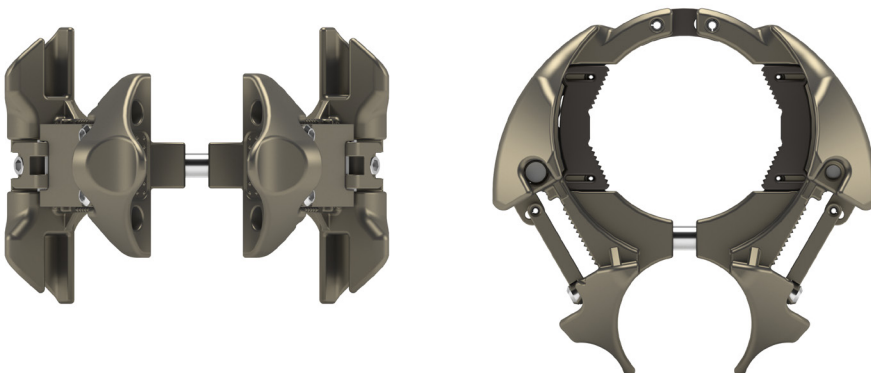
The 7" bypass clamp can be machined for 2-3/8" or 2-1/8" bypass tubing, and for 338 series to 400 series ESP neck sizes. This clamp also comes with a universal cable clip to grip 1/4" discharge pressure lines and the ESP MLE cable.

FEATURES & BENEFITS

- Precision investment castings
- Robust designs
- Universal clamp for 9-5/8" casing
- Grip features to prevent slippage, load tested to 0.86 ton
- Universal cable clip designs for flat MLE and 1/4" discharge pressure line

SPECIFICATIONS

- Low alloy steel or 13Cr material options



Technical Specifications - Bypass Tubing Clamp

Bypass Clamp				
Part Number	Casing Size	Clamp OD (in)	ESP Size	Bypass Tubing Size
TD12-096	7"	5.960	Universal 300/400 Series	2-1/8"
TD12-100	7"	5.960	Universal 300 Series	2-3/8"
BPC-0700-014C	7"	6.000	Novomet 319 Series	2-7/8"
BPC-09625-005	9-5/8"	8.350	500 Series	2-3/8"
BPC-09625-013	9-5/8"	8.350	Universal 500 Series	2-7/8"
BPC-09625-034	9-5/8"	8.350	400/500 Series fixed neck sizes - refer to drawing table	2-7/8"
BPC-09625-034	9-5/8"	8.350	Universal 400 Series	2-7/8"
BPC-09625-069	9-5/8"	8.350	Universal 500 Series - ABC Installation	2-7/8"
BPC-09625-051	9-5/8"	8.350	Universal 500 Series - Flatpack (Ecuador specific)	2-7/8"
BPC-09625-100	9-5/8"	8.350	Universal 400 Series	3-1/2"
BPC-09625-059	9-5/8"	8.250	Novomet 406 Series	4-1/4"
BPC-09625-048	9-5/8"	8.375	Universal 300 Series	4-1/2"
BPC-10750-0003	10-3/4"	9.53	Machined Neck for 500 Series	3-1/2"
BPC-10750-0008	10-3/4"	9.53	SLB 562 Protector (Trident MLE Pothead)	3-1/2"

