



## BOP CAN - Rental

The UMS Flowell BOP Can system is a completely universal equipment package that can be used for ESP well tests on land, offshore fixed leg drilling rigs, or subsea wells.

The equipment package comprises of the following main components:

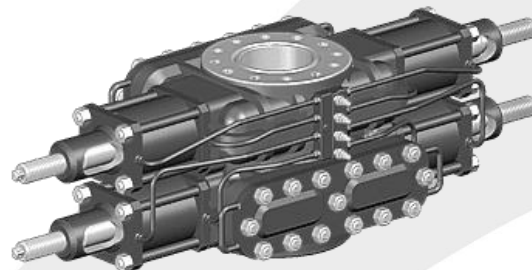
- BOP Can
- BOP Can adjustable mandrel
- Adjustable fluted hanger
- Spacer joints (2ft, 3ft, 5ft)
- Crossovers
- Tools and dummy penetrator

Configurations for the above components can be found on the attached pages.

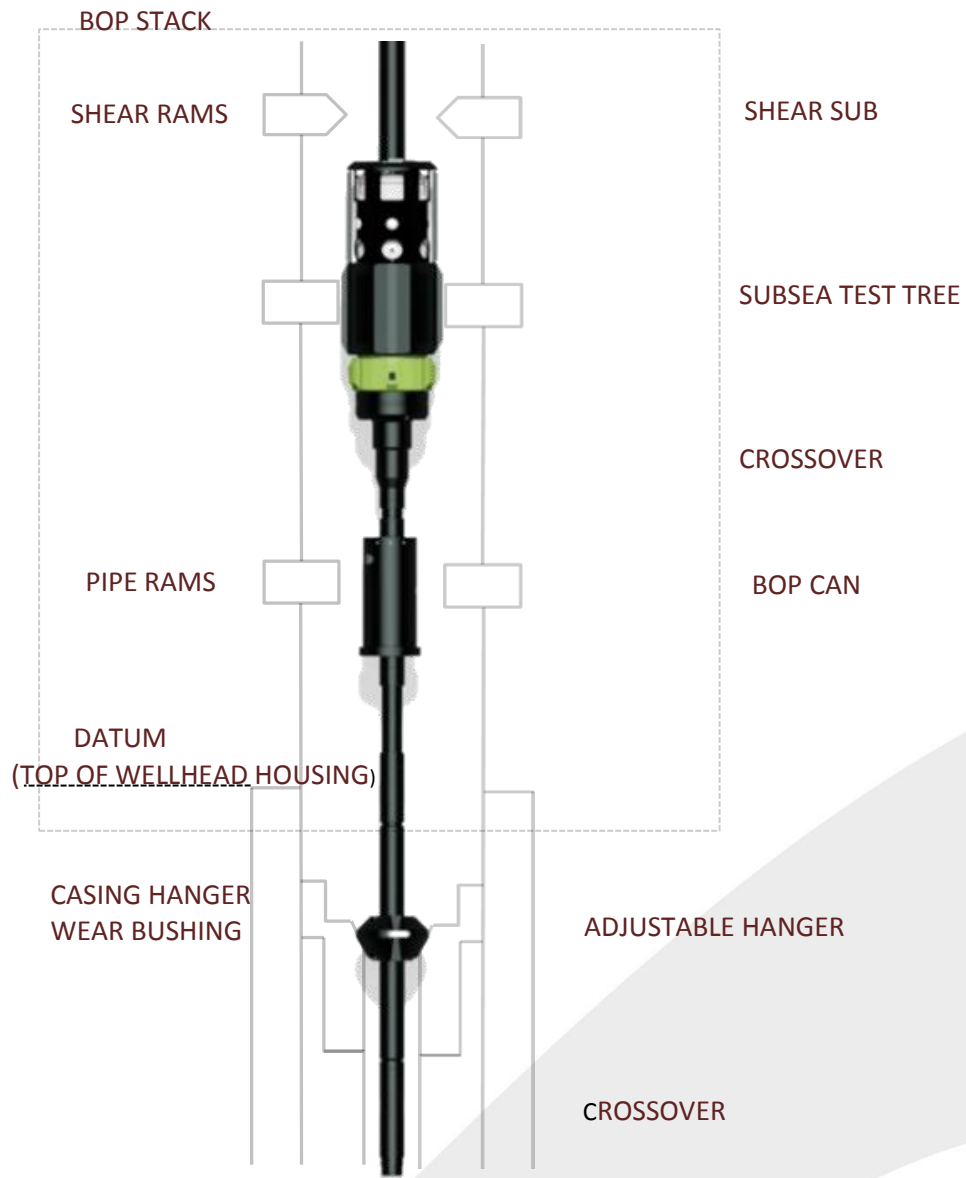
Each component has UMS Flowell's patent pending and trademarked 3.750-6 SA Piranha Lock (PL) connector which allows the system to be made up easily in any configuration required without the need for power tongs.

The unique design of the PL connector is such that the connection is secured against thread back off for challenging environments. The design of the system allows for the space out to be adjusted to suit any BOP stack configuration using an adjustable hanger, adjustable BOP Can mandrel and spacer joints.

A full system is supplied with thread and seal protectors in a custom-built shipping box.

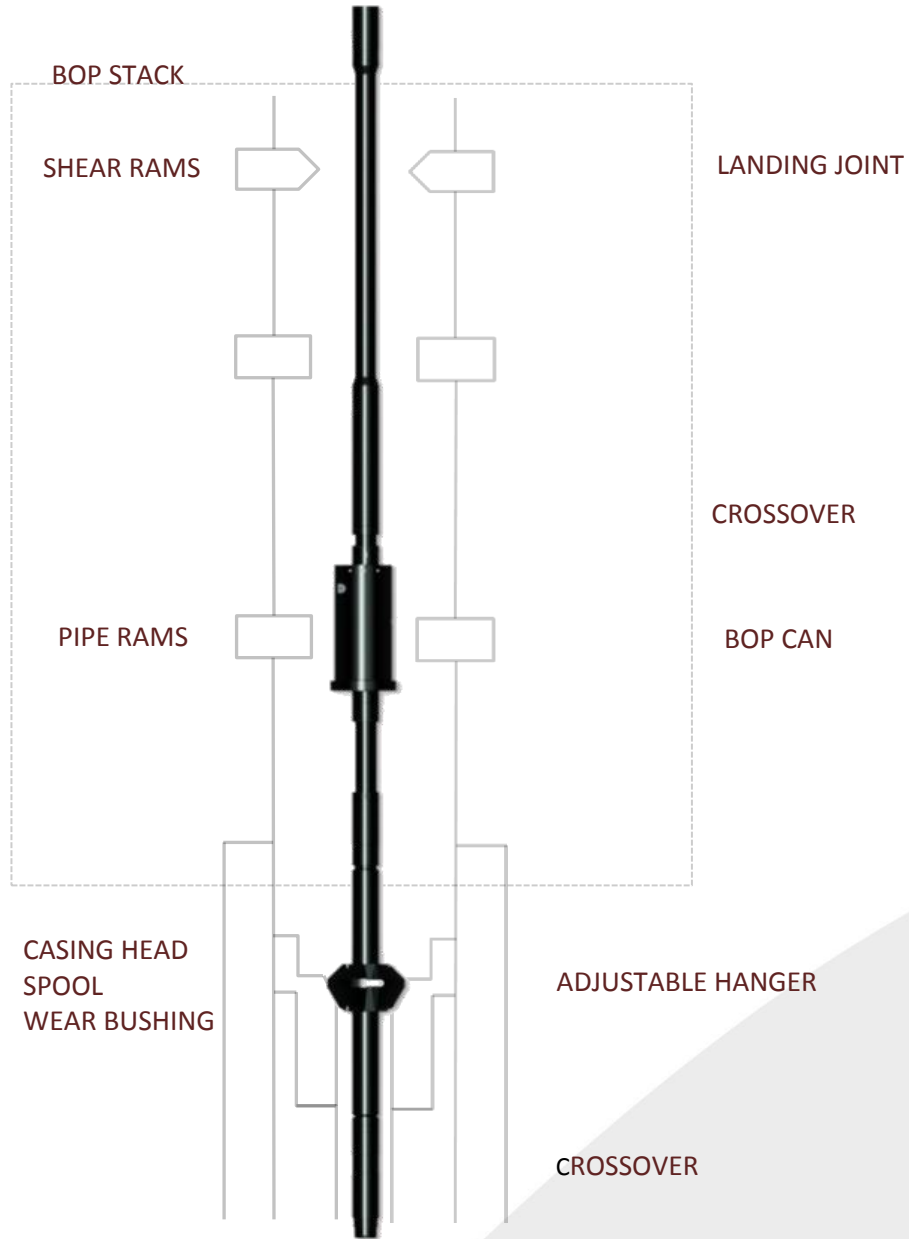


Equipment Datasheet	
Document #	005
Revision	AA



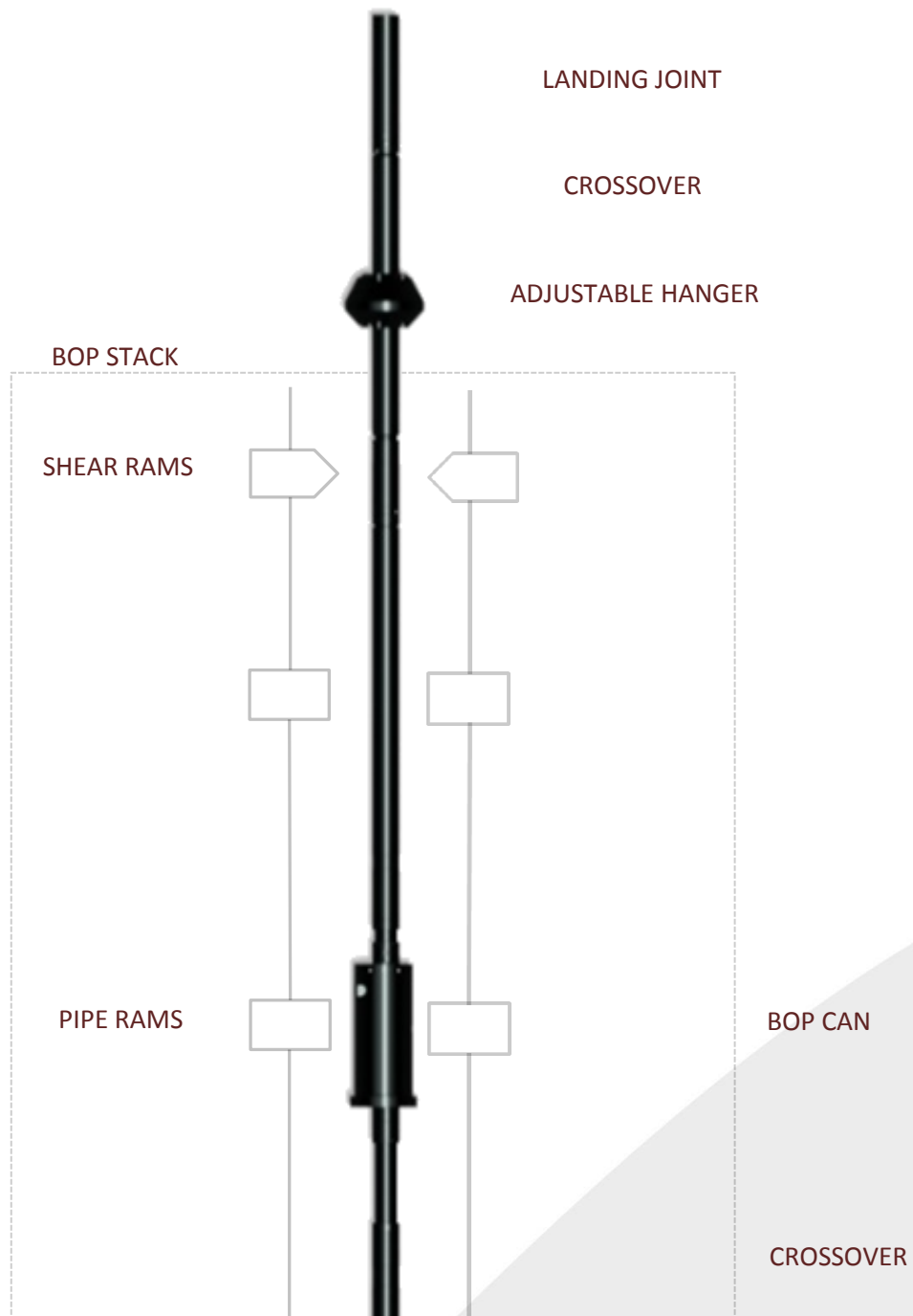
**FIGURE 1 – TYPICAL SUBSEA WELLHEAD ARRANGEMENT**

Equipment Datasheet	
Document #	005
Revision	AA



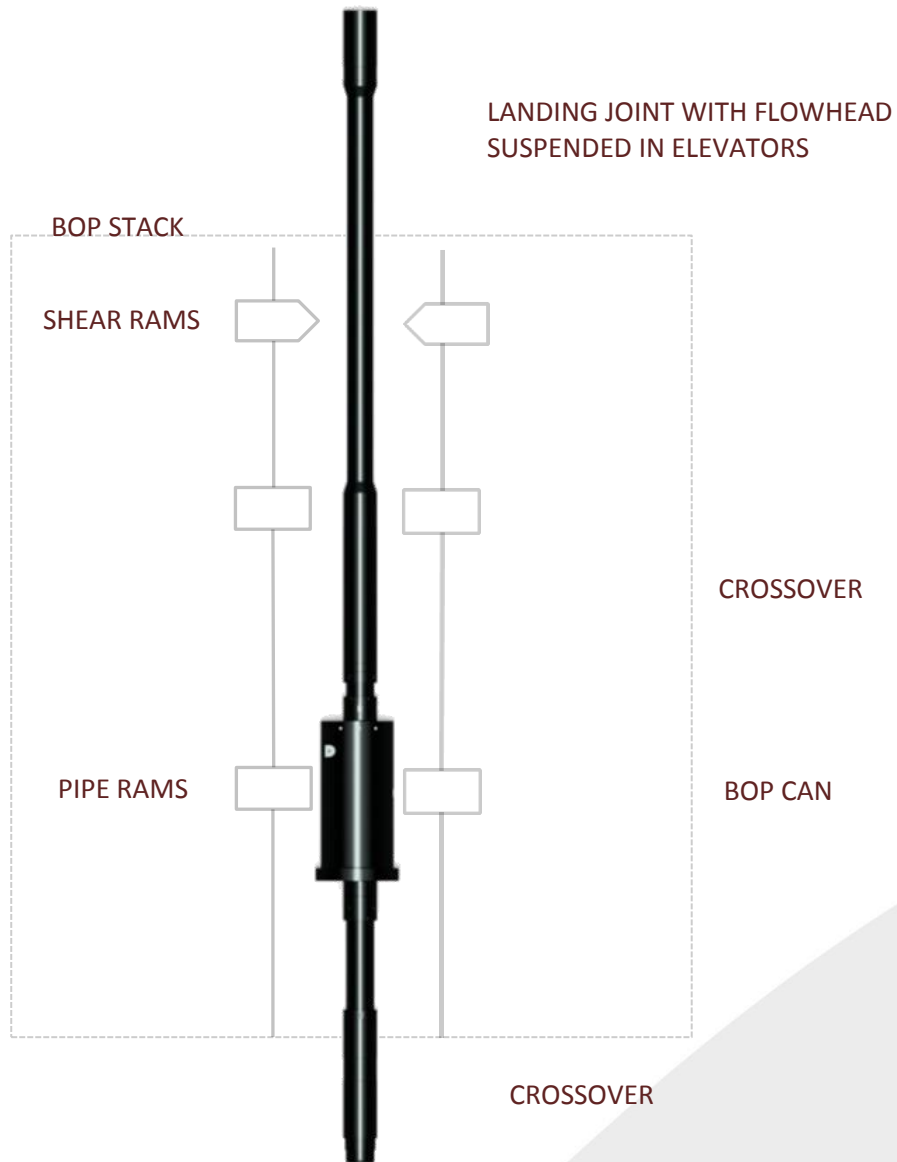
**FIGURE 2 – LAND WELL OR FIXED LEG OFFSHORE DRILLING RIG WITH HANGING POINT BELOW BOP STACK**

Equipment Datasheet	
Document #	005
Revision	AA



**FIGURE 3 – LAND WELL OR FIXED LEG OFFSHORE DRILLING RIG WITH HANGING POINT ABOVE BOP STACK**

Equipment Datasheet	
Document #	005
Revision	AA



**FIGURE 4 – LAND WELL OR FIXED LEG OFFSHORE DRILLING RIG WITH STRING HANGING IN THE ELEVATORS**